






Wildtier-Memory

Informationen für Lehrpersonen



1/6

<p>Arbeitsauftrag</p> 	<p>Die SuS spielen Memory und kleben die richtigen Paarungen auf ein Blatt.</p>
<p>Ziel</p> 	<p>Die SuS haben ersten Kontakt mit den Wildtieren und steigen spielerisch ins Thema ein.</p>
<p>Material</p> 	<p>Memorykarten zum Ausschneiden Lösungsblatt Arbeitsblatt</p>
<p>Sozialform</p> 	<p>Partnerarbeit Einzelarbeit</p>
<p>Zeit</p> 	<p>20'</p>

Wildtier-Memory

Arbeitsblatt



2/6

Aufgabe:

Schneide die Karten aus und klebe die zusammengehörenden Paare auf ein Blatt.



1



A



2



B



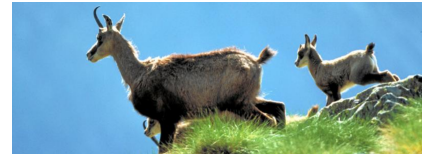
3



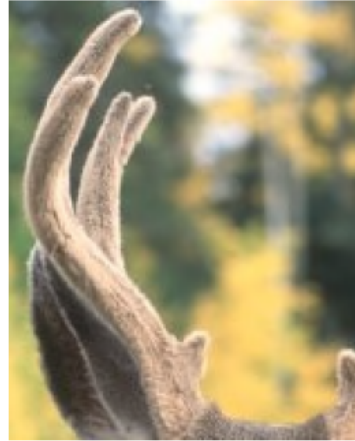
C

Wildtier-Memory

Arbeitsblatt



4



D



5



E



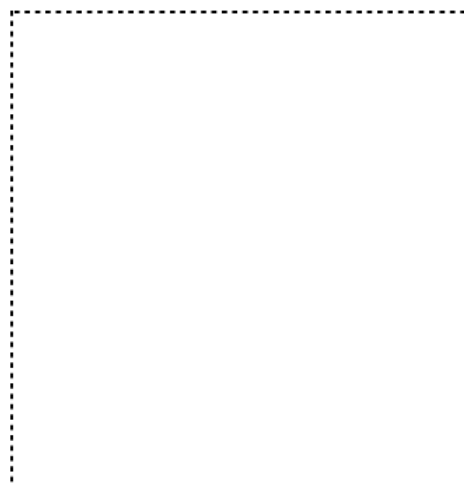
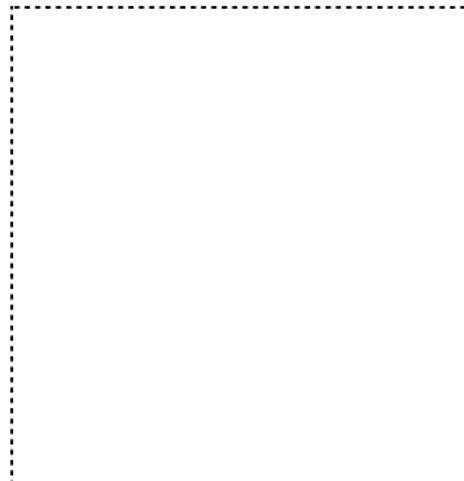
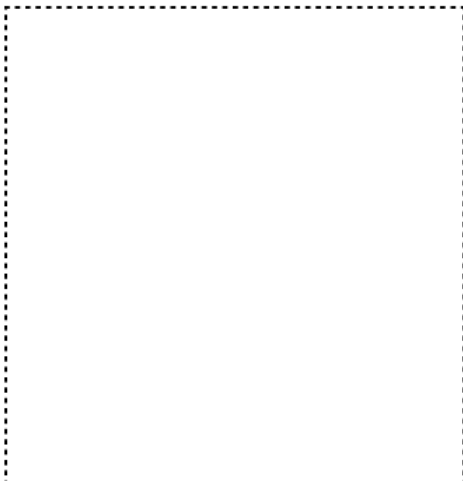
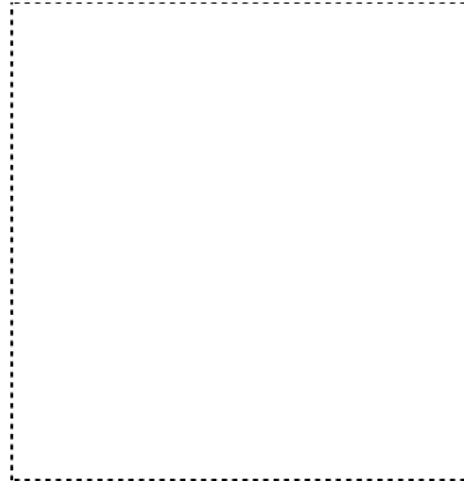
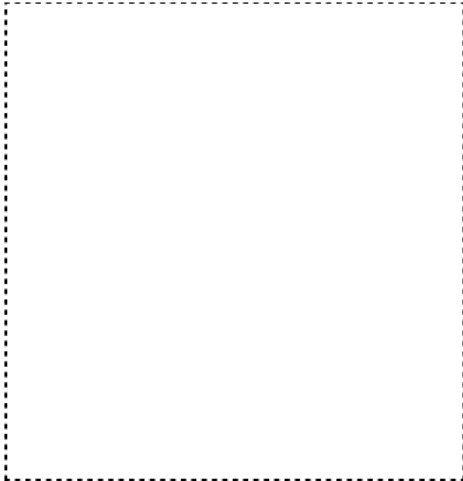
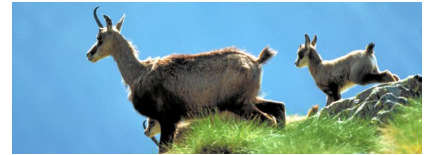
6



F

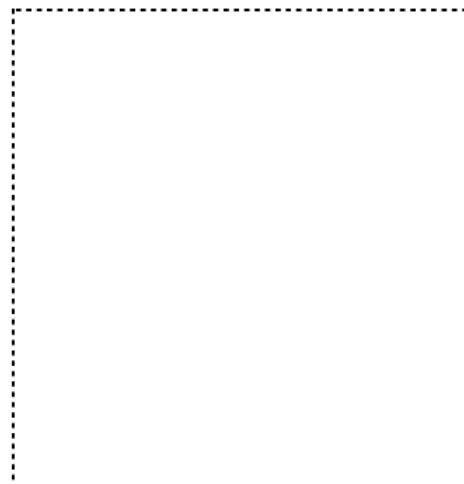
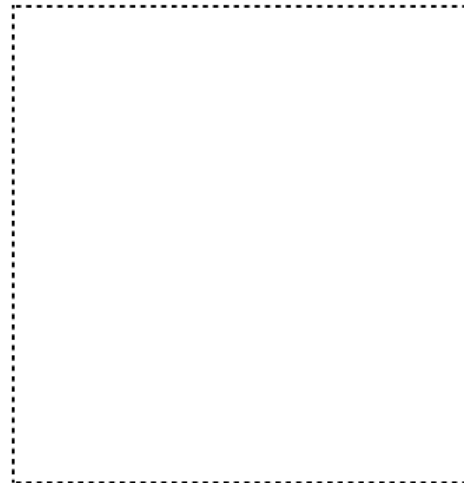
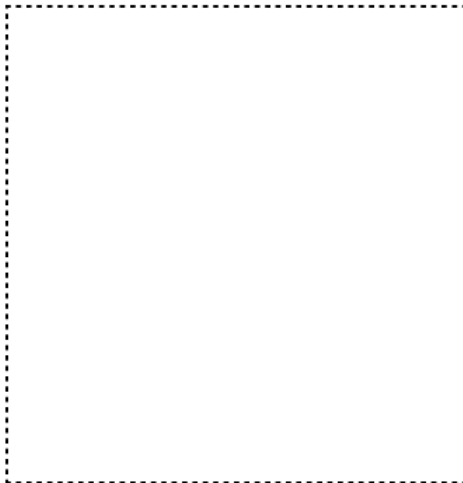
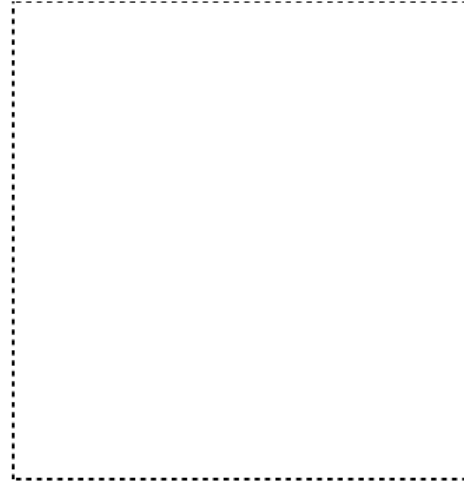
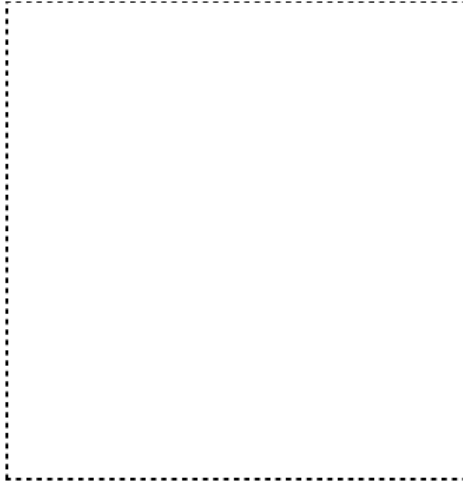
Wildtier-Memory

Arbeitsblatt



Wildtier-Memory

Arbeitsblatt



Wildtier-Memory

Lösung



- 1 Reh -> C Fell Reh
- 2 Wildschwein -> E Maisfeld
- 3 Marder -> F Motor-/Marderschaden
- 4 Fuchs -> A Fuchsbau
- 5 Hirsch -> D Hirschgeweih
- 6 Hase -> B Hasenohren